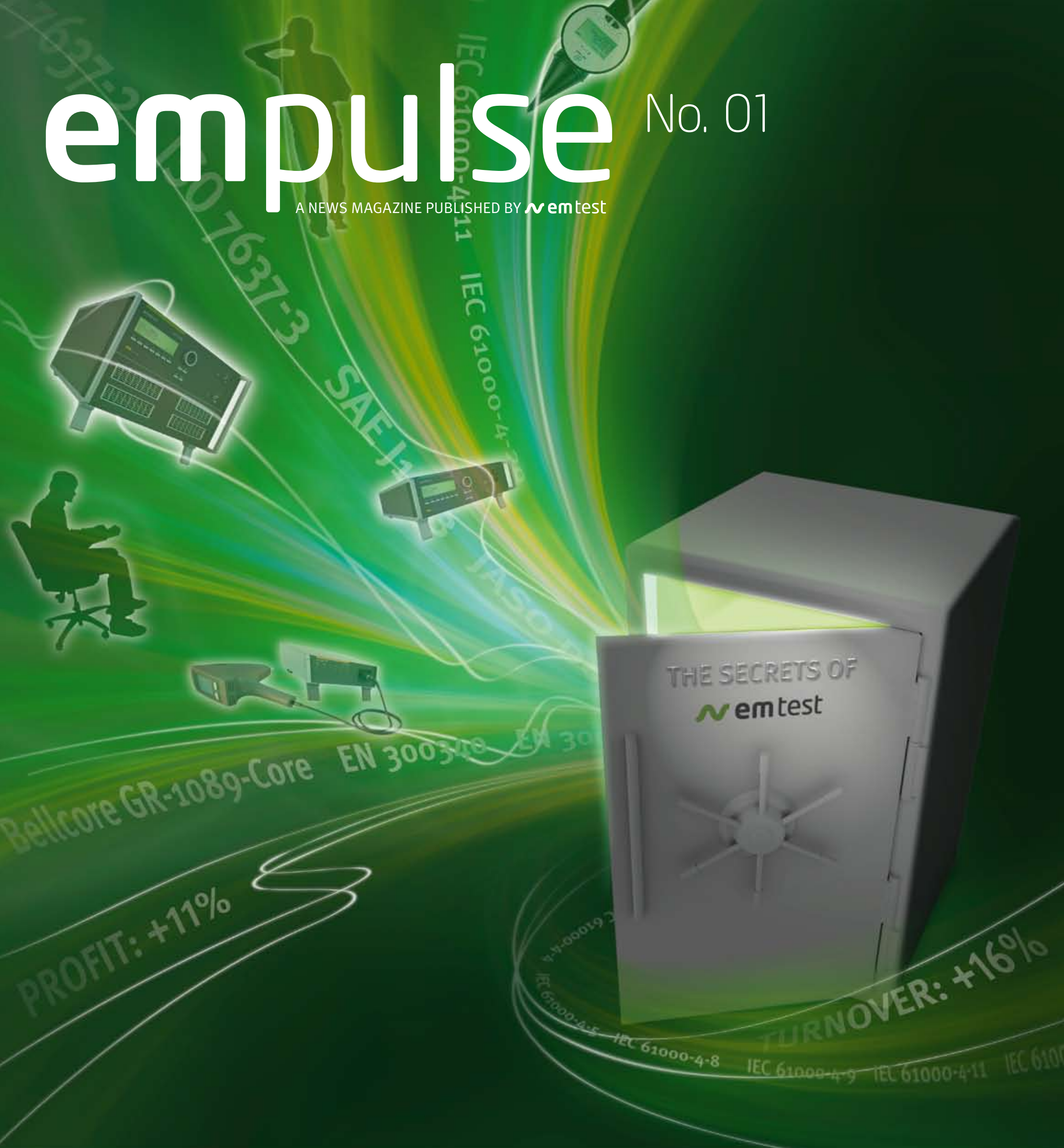


empulse

No. 01

A NEWS MAGAZINE PUBLISHED BY **nemtest**



› AUTOMOTIVE

QUALITY AT
EM TEST

› SOFTWARE EM TEST

CUSTOMIZED

› NEW EQUIPMENT

ESD 30N
UCS 500N7

EM TEST – A SUCCESS STORY

We proudly present the first issue of the EM TEST news magazine “empulse”. It’s time for Breaking News! After integrating a new, future-oriented management structure and taking on new partners such as the investor “The Riverside Company“, EMTEST has now entered a new era in its 20 year history. Consequently, our customers can now benefit considerably from: even more innovation as a result of additional investment, an even better, intensified service and extended sales activities with global presence on all markets.

The first results of this strong position are our new devices (p.8): for example the CWS 500N4, the revolutionary low-frequency test system for conducted immunity. And the ESD 30N, the ESD simulator for electrostatic discharges up to 30 kV. Incidentally, this device is the only one of its kind worldwide which is able to measure ambient temperature and humidity, an to integrate both in the test report, thus saving our customers a lot of time and effort.

Our financial statements from 2007 are also extremely gratifying, not to mention the interim balance in 2008 (p.6). All our expectations have already been exceeded – success which is due to the dynamics of our products and the expertise of our sales engineers.

Not only have we been able to achieve an increase in turnover on the new markets, but also on the domestic market - our latest success story: German carmakers are carrying out tests with EM TEST (p.11)! We are able to meet the growing, increasingly customized requirements of our customers with our up-to-date, 100 per cent market-oriented products and have every confidence in the future.

We are looking forward to continuing our successful business relationship!



Harald Kunkel
General Manager

Germano Taddio
General Manager

Uwe Flor
General Manager

STANDARDIZATION

SUPERVISION BY SUPERVISORS



Not only do our customers profit from the excellent technology, but also from EM TEST as a strong partner in political terms. A current example is the IEC 61000-4-4 (Burst standard). For years the verification of the simulator has been disputed. An attempt was made to find a solution using the Corrigendum 2. We repeatedly pointed out that Corrigendum 2 was not the correct answer to the problem. Recently, another attempt was made and the MT 12 (standard committee) considered the matter again. The physical characteristics were edited and the countries voted with a majority of 15 to 8 in favor of a reassessment of the Corrigendum 2. The physical adjustment is imminent. We assume that our proposals will be implemented at the next session in December. As a result of our commitment in this matter, we have successfully secured a decisive advantage for our customers.

TABLE OF CONTENTS

NEWS

- Tradition and Innovation 02
- Standardization 02
- New Design for EM TEST 03

FOCUS

- EM TEST introduces itself 04 – 05
- Facts and Figures 06 – 07

TECHNOLOGY

- The new product generation 08 – 09

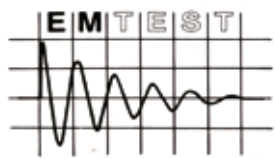
PRACTICAL EXPERIENCE

- Software 10
- Experience Audi 11
- Globalization 11

POWERFUL SIGNAL TO THE MARKET: OUR NEW CORPORATE DESIGN.

Former logos

1987



1993



New unmistakable logo

2007



"It looks good." These were the first spontaneous comments of our customers on our new Corporate Design. As the development of EM TEST had been so fast-paced and clearly linear, by 2008 it was decided that the time had come to create the new Corporate Design. Communication experts talk about brand personalities presenting themselves in an optimal, clear and unmistakable manner.

The new logo provides the brand EM TEST with the standardized, innovative appearance of the market leader. The newly interpreted symbol of the pulse – throughout the years a part of our logo – symbolizes the presence and competence of our company. We feel both pleased and encouraged by customer reactions to our new design and are delighted by the attributes associated with our logo: trendsetting, innovative and 100 per cent customer-oriented.

20 YEARS OF EM TEST EXHIBITION DESIGN WAS HIGHLIGHT AT EMV 2008



Launch at EMV 2008. For the very first time our new Corporate Design was presented to the general public. The booth was completely restyled in our new Corporate Design. Right from the first day the booth attracted a great deal of interest because of its clarity, aesthetics and positive atmosphere in which the driving

impulse of the company was clearly evident. EMTEST's policy is to do whatever is necessary in order to get a few, decisive steps ahead of the competition, now and in the future. Proof of this policy could be viewed and admired at the EMV 2008: brand-new equipment with stunning new functions.

IMPULSES THAT MAKE THE DIFFERENCE: WITH THE PARTNER PROGRAM EM TEST CONTINUES TO GROW.



Thanks to our customers' satisfaction we continue to grow – and even faster than some of our competitors might appreciate it. Countless, exciting challenges set by our customers are met by EM TEST's innovative solutions. Twenty years of success mean that the company is ready for new challenges. Consequently, EM TEST has already begun to introduce far-reaching changes in the form of the "EM Partner Program" which will secure the future of the company, at the same time solving the question of succession with the new generation of managers.

While some companies seek advice from personnel consultants, EM TEST picks the best from its own ranks.

Reliable, long-term employees are systematically advanced to management level. The "EM Partner Program" could be used as a guideline for other companies to ensure a know-how supporting management development.

SUCCESS FACTOR EM PARTNER PROGRAM: THE NEW MANAGEMENT INTRODUCE THEMSELVES.

After two successful decades it was time to expand our management and to set the course in terms of human resources in order to be prepared for future challenges. Therefore our management has been reinforced with highly-qualified and dedicated col-

leagues from our own ranks. Together with the new investor Riverside, several of the employees from the second management level took up shares and form now together with the founders a new holder team of the EM TEST group.

THE FOUNDERS



Germano Taddio
Commercial director
EMTEST Switzerland

Harald Kunkel
Technical director
EMTEST Switzerland

Uwe Flor
General Manager
EMTEST Germany

It is often the case that, after a few decades, the founders of medium-sized companies have difficulties finding and integrating qualified, next-generation management. EMTEST has already found the solution to this problem, by introducing the EM Partner Program: without having to resort to expensive external experiments but with the advantage of outstanding minds from its own ranks.



THE MANAGEMENT



Roland Spriesler
Head of Sales support/
Administration
EMTEST Switzerland

Andreas Lindenthal
Head of Software
engineering
EMTEST Switzerland

Benedikt Hänggi
Head of Purchasing/
Construction
EMTEST Switzerland

Erich Brogli
Head of Quality assurance
EMTEST Switzerland

Alain Burger
Head of Hardware/
-Firmware engineering
EMTEST Switzerland

Rüdiger Späth
Technical manager/
Sales
EMTEST Germany

Frank Niechial
Sales manager
EMTEST Germany

Achim Kuhnert
Proxy
EMTEST Germany

Michael Kreisel
Head of Service &
Calibration laboratory
EMTEST Germany

THE CREW



Jutta Peil
Sales assistant national
EMTEST Germany

Christiane Kriener
Administration
EMTEST Germany

Andreas Lobeck
Head of EMC-Laboratory
EMTEST Germany

Klaus Windemuth
Controlling/Accounting
EMTEST Germany

Alexander Weber
Sales national
North/East
EMTEST Germany

Guido Kerl
Sales national
South/West
EMTEST Germany

Jörg Marquardt
Sales support/Technology
EMTEST Germany

Kristian Woitaschek
Service & support
EMTEST Germany

Manuel Mihlan
Calibration laboratory
EMTEST Germany

Jörg Schürmann
Calibration laboratory/
Service & Support
EMTEST Germany



Liu Xiaohua
EMTEST China

Adnan Moosabhoj
Sales support
EMTEST Switzerland

Markus Fuhrer
Customer support
EMTEST Switzerland

Robert Bratschi
Sales support
EMTEST Switzerland

Ralf Eickhoff
Service & Support/
Hardware
EMTEST Germany

Andreas Meschberger
IT & Infrastructure
EMTEST Switzerland

Brendon Lim
EMTEST Malaysia

Thilo Currie
Administration
EMTEST Switzerland

Helena Stabel
Administration/Logistics
EMTEST Switzerland

Christoph Herde
Hardware &
Documentation
EMTEST Switzerland



Daniel Kessler
Software engineering
EMTEST Switzerland

Patrick Jenny
Software engineering
EMTEST Switzerland

Heribert Rump
Shipping department
EMTEST Germany

Florian Schürch
Quality Assurance
EMTEST Switzerland

Jan Kleintert
Quality Assurance
EMTEST Switzerland

Frank Kellerhals
Process engineering
EMTEST Switzerland

Claudio Ferro
Material Resource Planning
EMTEST Switzerland

Luís Antunes
Quality Assurance
EMTEST Switzerland

Harry Cipolla
Quality Assurance/
Systems
EMTEST Switzerland

Pablo Marending
Quality Assurance
EMTEST Switzerland



Martin Koch
Hardware/Firmware
engineering
EMTEST Switzerland

Bertran Hanser
Firmware engineering
EMTEST Switzerland

Alain Mislin
Firmware engineering
EMTEST Switzerland

Franz Meury
Hardware engineering
EMTEST Switzerland

Francois Spente
Firmware engineering
EMTEST Switzerland

Paul Mischke
Sales support
EMTEST Switzerland

Anke Filbrandt
Sales support
international
EMTEST Germany

Markus Baldischwiler
Quality Assurance
EMTEST Switzerland

Dominik Baumgartner
Quality Assurance
EMTEST Switzerland

Philippe Schwaldt
Quality Assurance
EMTEST Switzerland



Fausto Aenishänslin
Logistics
EMTEST Switzerland

Antonio Makula
Logistics
EMTEST Switzerland

Salvatore Privitera
Quality Assurance
EMTEST Switzerland

Sven Schäuble
Administration QA
EMTEST Switzerland

Thien Egi
Software engineering
EMTEST Switzerland

Christine Müller
Accounting
EMTEST Switzerland

Patrick Syri
Calibration laboratory
EMTEST Germany

Michael Piasecki
EMC-testing laboratory
EMTEST Germany

Beate Müller
Administration/Shipmnet
EMTEST Germany

THANK YOU FOR OUR SUCCESS

2007

HAS BEEN THE MOST SUCCESSFUL YEAR SO FAR IN
THE 20 YEAR HISTORY OF EM TEST

2008*

TURNOVER: + 16 %

TOTAL ORDER VALUE: + 26 %

PROFIT: + 11 %

WORKFORCE: + 15 %

WE LOOK FORWARD TO FURTHER SUCCESSFUL YEARS. **YOUR EM TEST**

GET PEOPLE MOVING, AND YOU'LL MAKE THINGS HAPPEN: THE PRIVATE EQUITY COMPANY RIVERSIDE JOINS EM TEST.

For many years we have registered a strong, healthy corporate development – driven by innovative solutions and excellent service. As a global player in the field of EMC, EM TEST has now gained added strength by taking on a new partner: EM TEST has taken the investor “The Riverside Company” on board. Riverside is the largest global private equity firm focused on small and medium-size companies. A very good choice: since 1988, Riverside has invested in more than 203 transactions – all of them highly profitable, well managed market leaders.

We are pursuing a precise strategy for growth with Riverside: higher investment, extension of the product range, consolidation of research and development and strategic complement acquisitions. The innovative capacity of the new group was clearly demonstrated at the EMV 2008, where the world's first, the CWS 500N4, was presented along with the new design and complete Vista compatibility for the entire product range of application options and functions, and last but not least, the new Corporate Design.



Riverside Company

20 YEARS ON – EM TEST REINVENTS ITSELF: STRATEGIES FOR THE FUTURE.



Harald Kunkel
Technical director
EM TEST Switzerland

01 INCREASE INVESTMENT

Consistent innovation helps to get ahead of the competition – our customer really appreciate that. Our development departments continually amaze them with world innovations and unique solutions. This of course involves consistent, comprehensive research and development work, as well as target-oriented investment in all mayor company resources. Conse-

quently, the workforce was again enlarged in 2007 and 2008. In this way EM TEST can be sure of employing the best minds in the business and is able to offer them optimal working conditions. These investments will benefit our customers.



Rüdiger Späth
Technical manager/
Sales
EM TEST Germany

02 DEVELOP SALES STRATEGIES

Wherever your company may be located, we are on site, close to our customers, and are in the process of expanding our trade to all essential markets worldwide. We are now cooperating with highly-qualified sales partners worldwide so that we can act quickly, with foresight and in a trend-setting manner. Your advantages: We offer expert advice,

implement solutions on site, react fast to customers' requests and last but not least: we are delighted by the speed with which we are able to develop brilliant innovations.



Liu Xiaohua
EM TEST China

03 EXPAND GLOBAL SERVICE

Our business does not end with closing the sale. We continue to support our customers with excellent service – worldwide. For instance in China. In order to open up such a big future market with necessary investment, EM TEST took the investor Riverside on board just at the right time. With bases in all important markets, EM TEST offers an exemplary service to all

our customers and is continually developing new solutions in conjunction with them. Our representatives are absolutely service-oriented and do not have any linguistic limits. Prompt service goes without saying.



Andreas Lindenthal
Head of Software
engineering
EM TEST Switzerland

04 CUSTOMIZED SOFTWARE

Flexible just like your tasks: We offer software solutions which can be used worldwide and can be customized to meet your demands. EM TEST provides you with perfect software support for each device, with all available routines und exceptionally user-friendly possibilities to compile your own test routines. Of course, you also benefit from advantages such

as the continuously updated standard library, comprehensive issue of customized test reports, complete support of system functions, the standardized “Look and Feel” and much more ... see page 10.

WE REMAIN TRUE TO OURSELVES. NEW IS OUR FAVOURITE WORD.



ESD 30N

THE NEW EM TEST ESD TEST SYSTEM
WITH ERGONOMIC TEST GUN



IEC 61000-4-2, ISO 10605

- › Discharges up to 20 Hz
- › Bleed-off function
- › Battery mode
- › Fast exchange of the R/C discharge modules thanks to „Easy Exchange“
- › USB-interface
- › Software runs under Windows Vista®

BEST IN TEST: NEW FUNCTIONS, NEW DESIGN



ACS 500N



AutoWave



CA BS



CNI 503



CSS 500 N2



DPA 500 N



EFT 500 N8.1



EFT 500 N5



LD 200 N



MV 26xx



UCS 500 N4



VCS 500 N4



VCS 500 N7T



VCS 500 N8



VCS 500 N10



UCS 500N7

BURST, SURGE, POWERFAIL, MAGNETIC FIELD AND TELECOM-SURGE IN ONE DEVICE



IEC 61000-4-4, -5, -8, -9, -11, -29, ANSI C62

- › Test voltage up to 7 kV
- › USB interface
- › Software runs under Windows Vista®

OPTIONAL ACCESSORIES

T-SURGE MODULE



ITU K44, K20, FCC part 68

- › 10 µs/700 µs up to 7 kV test voltage
- › Integrated coupling network according to ITU; FCC part 68 and IEC 61000-4-5

RINGWAVE MODULE

IEC 61000-4-12, ANSI/IEEE C62.41

- › Test voltage up to 6 kV
- › Rise time 0.5 µs
- › Oscillation frequency 100 kHz

For further information please request our product catalogue
Email to: sales@emtest.de



CSS 500 N10



CWS 500 N1



CWS 500 N2



CWS 500 N3



CWS 500N4



PFS 200 N30



RDS 200 N



T-Surge



UCS 200 N



UCS 200 N200



VCS 500 N12



VDS 200 N30



VSS 500 N6



VSS 500 N12

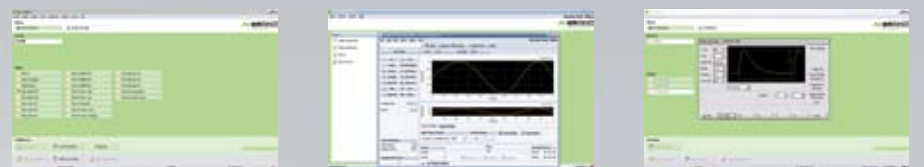
OUR SOFTWARE: INTELLIGENCE IS A HUMAN CHARACTERISTIC. ACTUALLY.



Think simple:
Customized software for
each test. The sophisticated
advantages of EM TEST
software.

- › Continuous standard library updates
- › 100 % compatible with Windows Vista®
- › Involvement of measuring devices
- › User-friendly interface
- › Individual configuration of tests
- › Automation of test sequences
- › Comprehensive compilation of reports user requirements

Only software experts with wide-ranging experience and understanding of the day-to-day work of our customers are able to think of everything. They know the exact requirements of our customers. They listen very carefully and develop together with our customers complete EM TEST software solutions that conform to the latest relevant standards. Outstanding customizability and innovation characterize our software, which is guaranteed to help achieve optimum performance.



autowave.control

battery simulation for maximum demand



dpa.control

evaluation and analysis, all in one



esd.control

test plan to test report completely reproducible



icd.control

the universal solution for sinusoidal quantity



iec.control

the standard for industrial, medical and telecommunication testing



iso.control

the standard for automotive testing



CUTTING-EDGE: GERMAN CARMAKERS TRUST IN EM TEST



Published in the EE-Times, Edition April 7 – 20, 2008

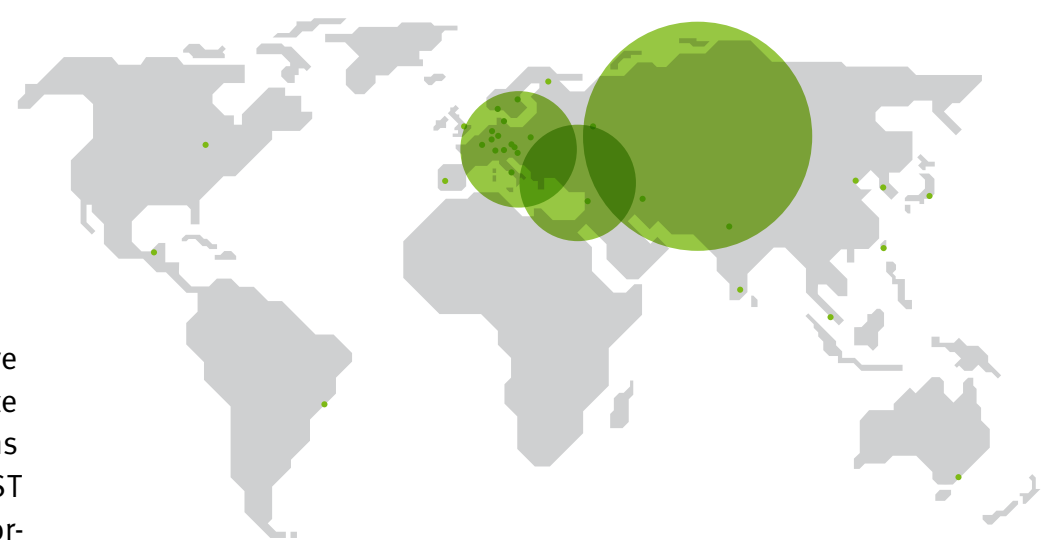
Read the complete article under www.emtest.de

The VDS 200N, which EMTEST developed especially for the automotive sector, is used to simulate the different kinds of battery supply wave forms. As a result of its capacity, which is comparable to that of a car battery, and because of its wide frequency range, entire vehicles can be realistically tested with all the battery simulations. In this way an optimal interaction of the individual components is guaranteed. As can be seen on the photo of the EE-Times article, April 2008, EMTEST products are being used by leading German car manufacturers for vehicle testing.

GLOBALISATION

EU EASTWARD EXPANSION: NEW LOCATIONS.

The EU Eastward expansion opens up new prospects for us. We are now turning towards the Eastern European markets where we already provide excellent customer support in our new, on-site branches. We have already established competent representations in Russia and in a number of Asian countries. Furthermore, EM TEST set up its own subsidiary in Poland in March 2008. It is also important to mention our cooperation with leading national institutes offices. The renowned Polish "Wroclaw University of Technology" acts as an EMC service provider and is also an important reference customer of EM TEST. Thorough tests are carried out there, using our equipment. In view of the university's excellent reputation, this is a significant, opinion-forming factor for success on the new markets.



EXPERIENCE EM TEST POWER. LIVE DEMONSTRATIONS AT THE FOLLOWING FAIRS:

| | | |
|---|--|---------------------|
|  | EMC Zurich 2009 Zurich, Switzerland | 12.01. – 16.01.2009 |
|  | SIATEXPO Pune, India | 21.01. – 24.01.2009 |
|  | EMV 2009 Stuttgart | 10.03. – 12.03.2009 |
|  | Automaticon Warsaw, Poland | 31.03. – 03.04.2009 |
|  | Techno-Frontier 2009 Tokyo, Japan | 15.04. – 17.04.2009 |
|  | EnerMotive 2009 Milan, Italy | 26.05. – 30.05.2009 |
|  | Electronics & Automation 2009 Utrecht, Netherlands | 27.05. – 29.05.2009 |
|  | EMC show Beijing Peking, China | 16.06. – 18.06.2009 |
|  | Wroclaw Symposium on EMC Wroclaw, Poland | 24.06. – 26.06.2009 |
|  | 2009 IEEE EMC Symposium Austin, USA | 17.08. – 21.08.2009 |
|  | go. automation technology Basel, Switzerland | 01.09. – 04.09.2009 |
|  | Dortmunder Autotag Dortmund | 02.09.2009 |
|  | Aerospace Testing Moscow, Russia | 06.10. – 08.10.2009 |
|  | EMC'09 Lodz Lodz, Poland | 13.10. – 14.10.2009 |
|  | EMCUK 2009 Newbury, England | 13.10. – 14.10.2009 |



EM TEST OFFICES

Switzerland
EM TEST AG › Sternenhofstraße 15 › 4153 Reinach › Switzerland
Telephone +41 (0) 61 717 91 99 › Fax +41 (0) 61 717 91 99
Internet <http://www.emtest.com> › E-Mail sales@emtest.ch

Germany
EM TEST GmbH › Lünener Straße 211 › 59174 Kamen › Germany
Telephone +49 (0) 23 07 2 60 70-0 › Fax +49 (0) 23 07 170 50
Internet <http://www.emtest.com> › E-Mail info@emtest.de

France
EM TEST France S.a.R.L. › Le Trident - Parc des Collines
› Immeuble B L - Etage 3 › 36 rue Paul Cevainne › 68200 Mulhouse
› France Téléphone +33 (0) 389 31 23 50 › Téléfax +33 (0) 389 31 23 55
Internet <http://www.emtest.com> › E-Mail info@emtest.fr

China
EM TEST Representative Office Beijing › Rm 913, Leftbank › No. 68 Bei Si
Huan Xi Lu › Haidian District › Beijing 100080 › P.R. China
Telephone +86 (0) 10 82 67 60 27 › Fax +86 (0) 10 82 67 62 38
Internet <http://www.emtest.com> › E-Mail emtestbj@public.bta.net.cn

Malaysia
EM TEST (M) SDN BHD › Unit B2-6, Jalan Dataran SD2 › Dataran SD2, PJU9
Bandar Sri Damansara › 52200 Kuala Lumpur › Malaysia
Telephone +60 (03) 62 73 22 01 › Fax +60 (03) 62 74 22 01
Internet <http://www.emtest.com> › E-Mail sales@emtest.com.my

Poland
EM TEST Polska › ul. Lema 33 › 26-613 Radom › Polska
Telephone +48 (0) 51 864 35 12 › E-Mail info.polska@emtest.de

The complete overview of worldwide branches can be found on the internet:

› EM TEST globally: www.emtest.com

All details about scope of delivery, design, performance, dimensions and correspond to the existing knowledge at time of printing.

Subject to change without notice. © EM TEST 2009.